



Australians on the Kokoda Trail.  
George Browning

# KOKODA

## A PHOTOGRAPHIC STUDY

### Japanese

- The Japanese plan was to take over positions of strategic significance, which was land full of resources or to allow the Japanese to defend their territory more effectively.

- Later, the Japanese felt that trying to advance more would tired out their troops and resources, so they halted there advance and tried defending what they have already captured.

### Similarities

- Both sides switched to the opposite tactic later after certain circumstances.

- Both used the jungle warfare

- Both sides unintentionally destroyed the land and villagers throughout the region during the countless battles that happened.

### Australians

- The Australians main plan was to defend Papua Guinea From the Japanese because this area was considered 'Australian' soil.

- They later switched to the offensive when the Japanese halted their advance because the Australians had a large amount of troops and resources.

- The Australians had the locals on their side specifically a group called the Fuzzy Wuzzy Angels which helped the soldiers by bringing back the wounded and sick soldiers to Owens' Corner for treatment and other helpful jobs.











25-pounder guns of the  
14th field Regiment Royal Australian Artillery  
being pulled through dense jungle near Uberi  
on the Kakoda Trail September 1942





AUSTRALIAN  
WAR MEMORIAL















**Australian troops moved in behind Matilda tanks for a dawn attack on the Japanese held village of Sattelberg. A wounded soldier is carried back to a dressing station on the shoulders of a soldier while others of the group stand around.**





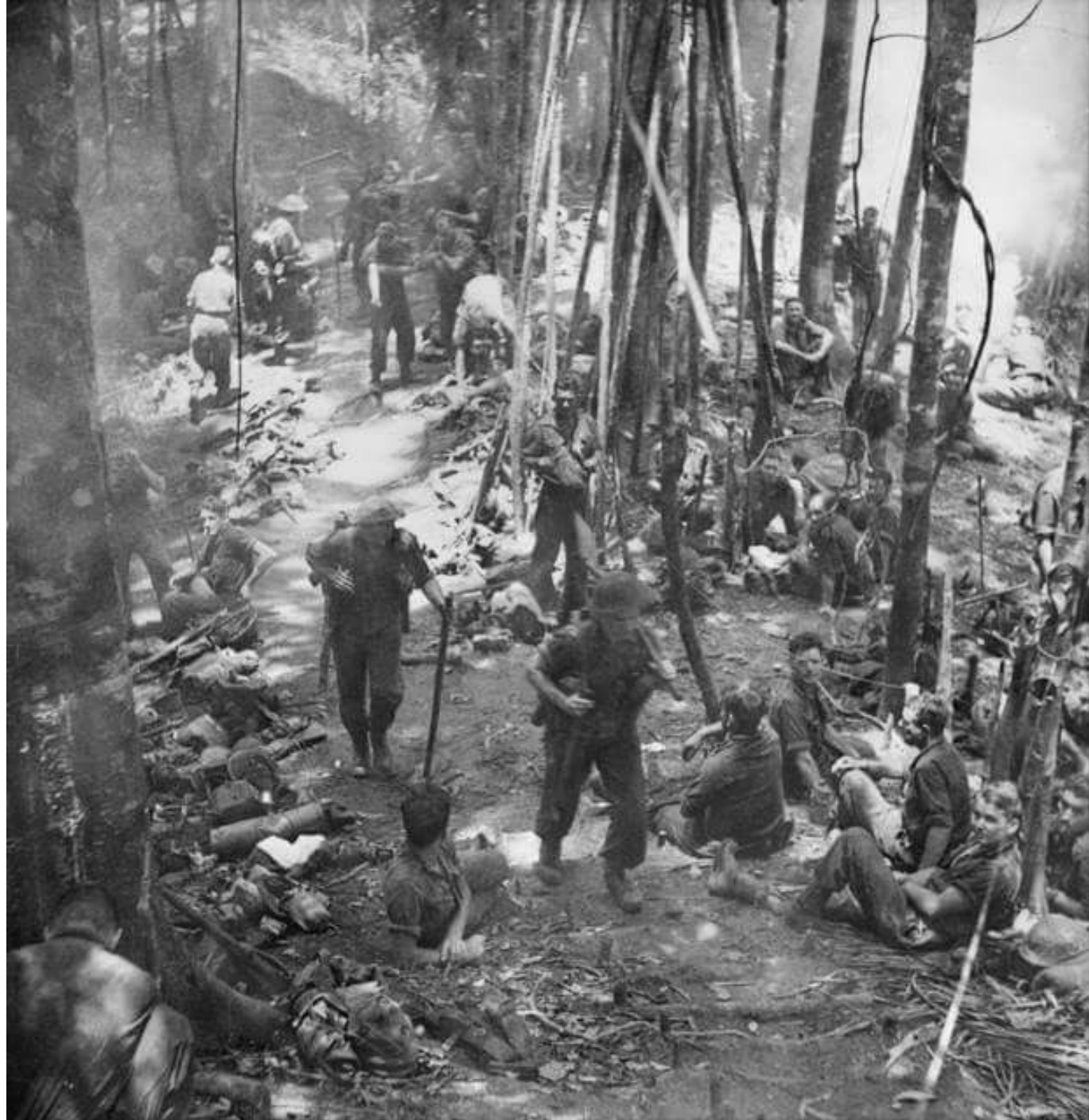




















AUSTRALIAN WAR MEMORIAL

ART24074















































16086







**DIGGERS PASS  
BY DEAD JAP  
SOLDIER**













