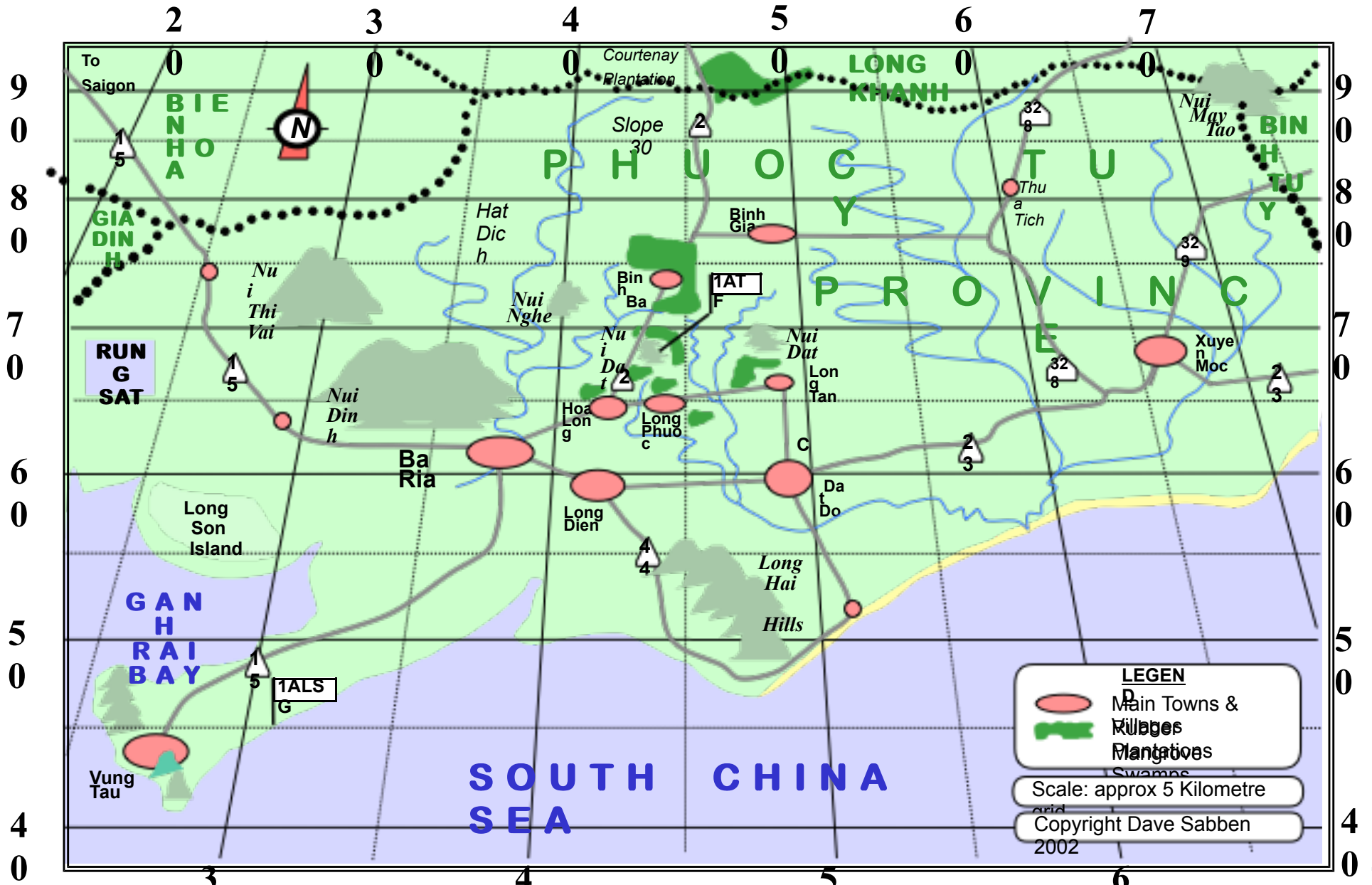


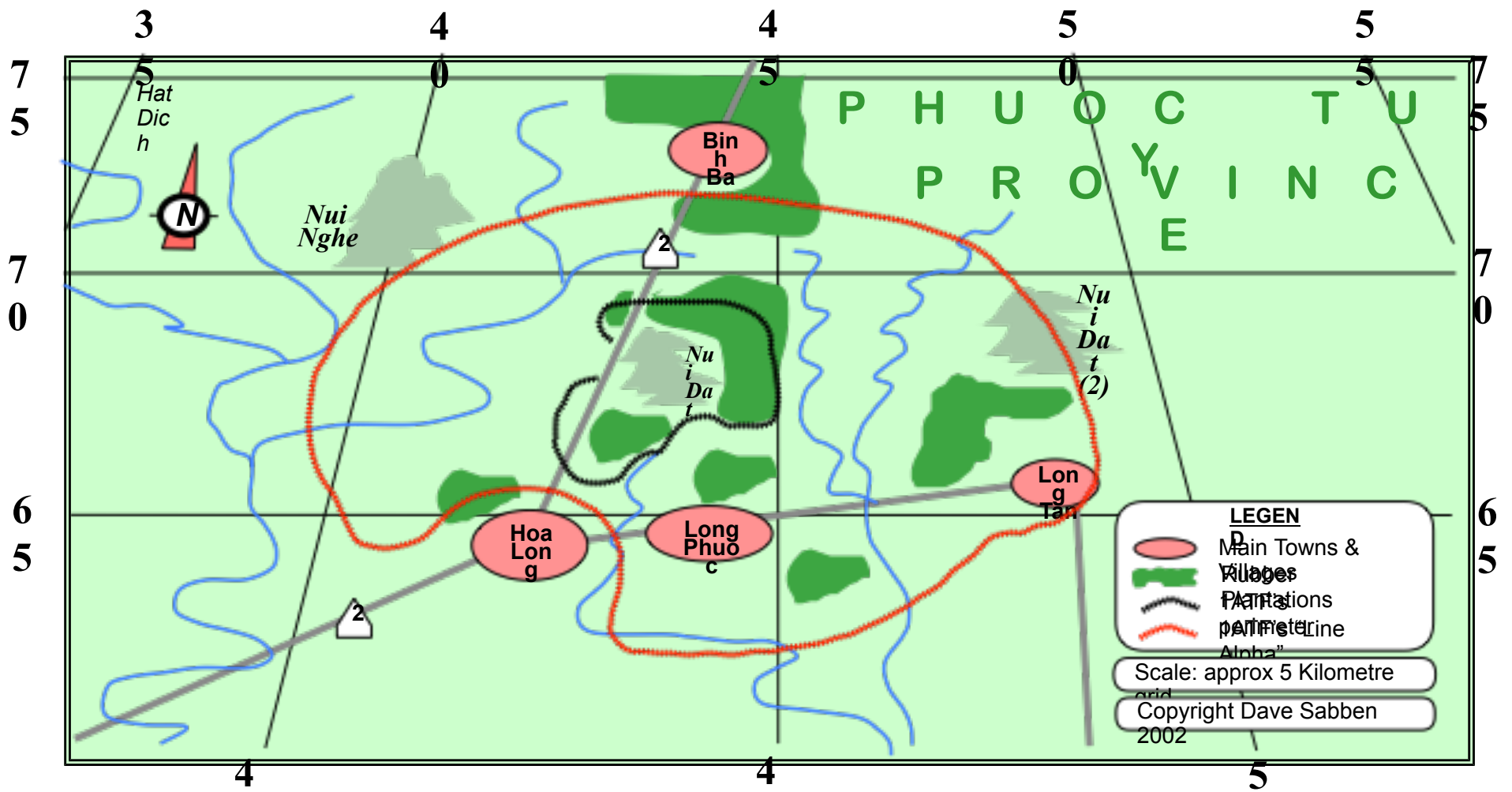
**THE
12 DECISIVE BATTLES
OF THE
3 INDO-CHINA WARS**

**presented by
DAVE SABBEN MG**

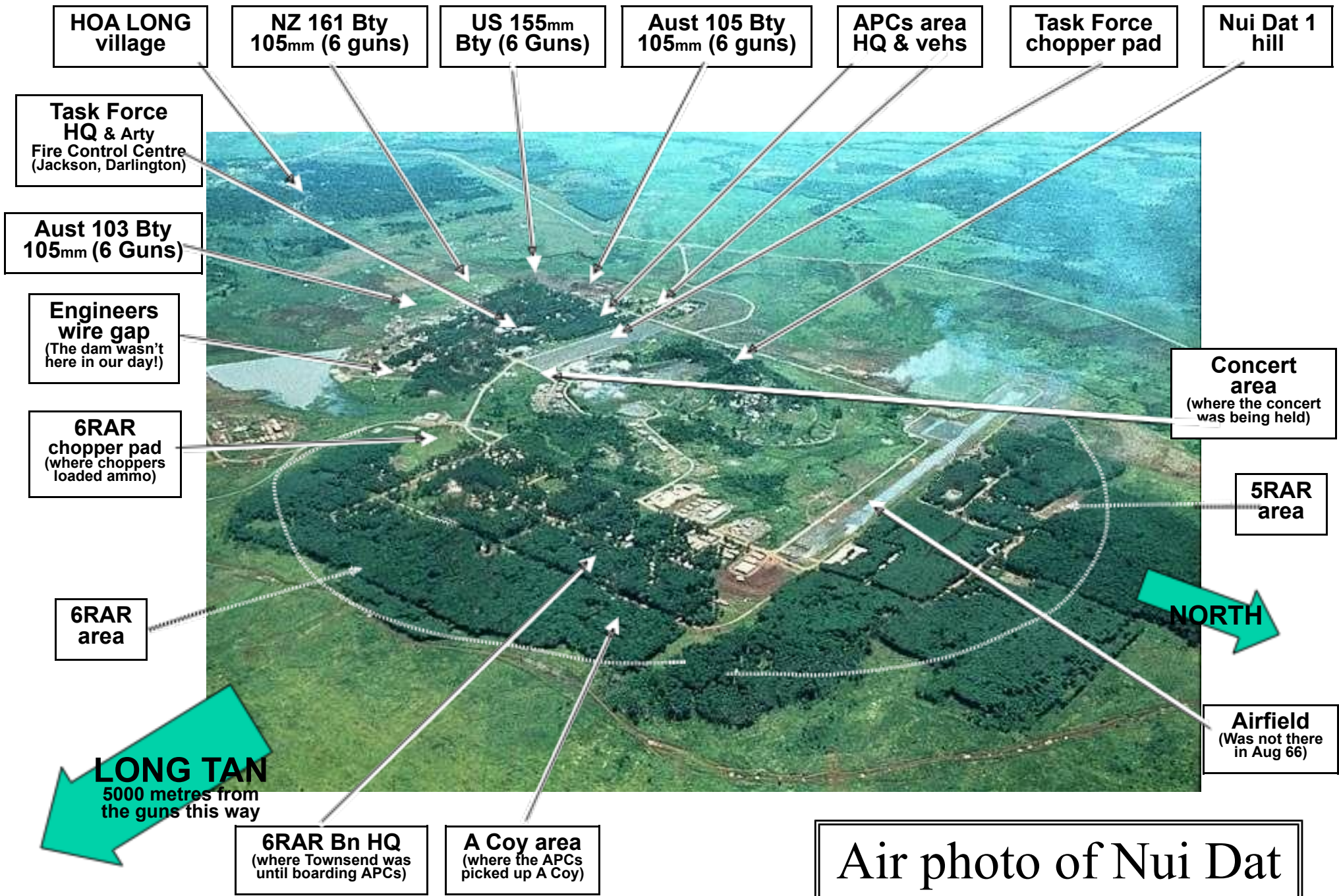
05 – Long Tan
Aug 1966



MAP 1 - PHUOC TUY PROVINCE, SOUTH VIETNAM



MAP 2 - 1ATF's "NUI DAT" BASE, PHUOC TUY PROVINCE, SHOWING "LINE ALPHA"



HOA LONG village

**NZ 161 Bty
105mm (6 guns)**

**US 155mm
Bty (6 Guns)**

**Aust 105 Bty
105mm (6 guns)**

**APCs area
HQ & vehs**

**Task Force
chopper pad**

**Nui Dat 1
hill**

**Task Force
HQ & Arty
Fire Control Centre
(Jackson, Darlington)**

**Aust 103 Bty
105mm (6 Guns)**

**Engineers
wire gap
(The dam wasn't
here in our day!)**

**6RAR
chopper pad
(where choppers
loaded ammo)**

**Concert
area
(where the concert
was being held)**

**5RAR
area**

**6RAR
area**

NORTH

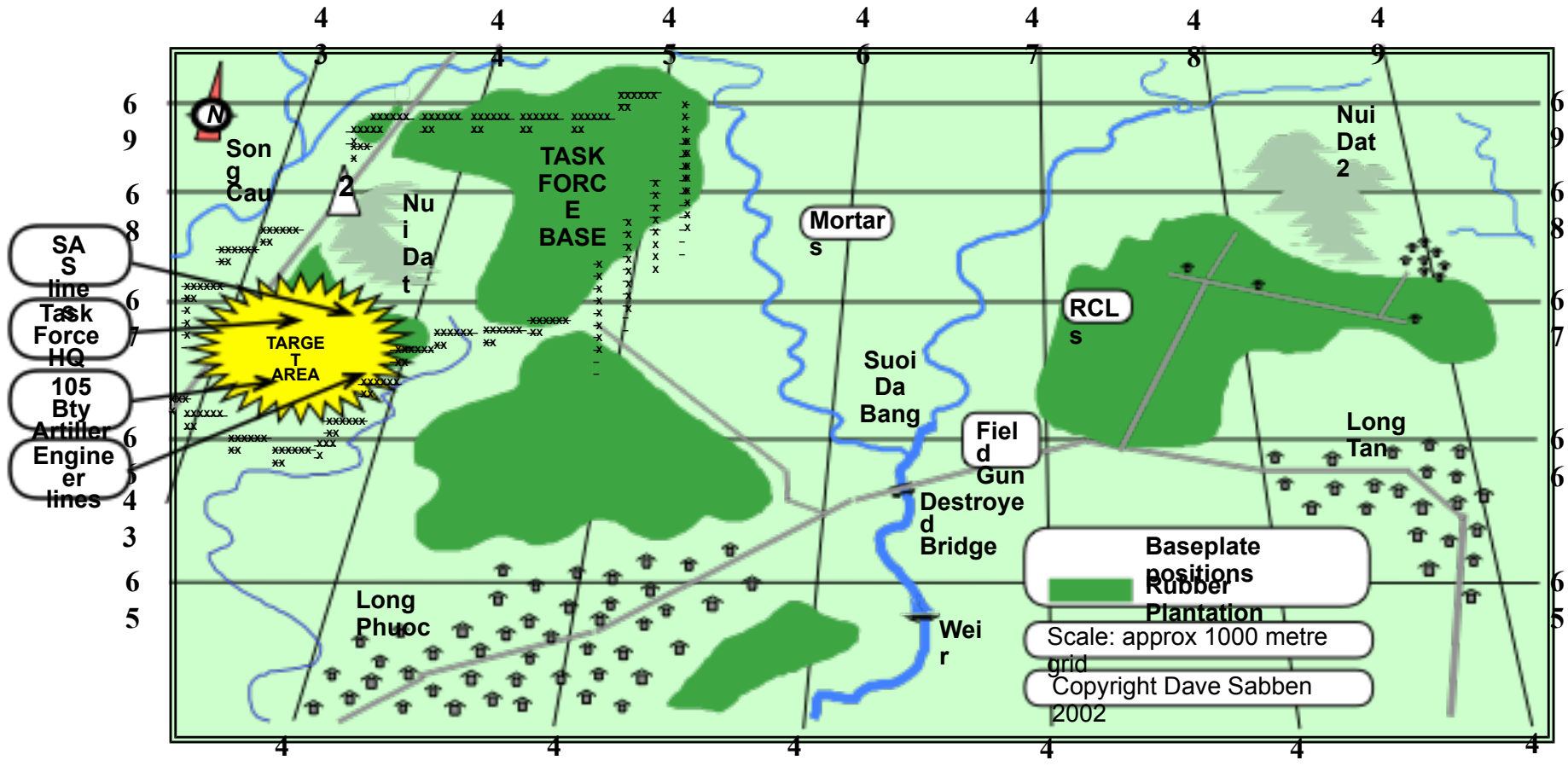
**Airfield
(Was not there
in Aug 66)**

LONG TAN
5000 metres from
the guns this way

**6RAR Bn HQ
(where Townsend was
until boarding APCs)**

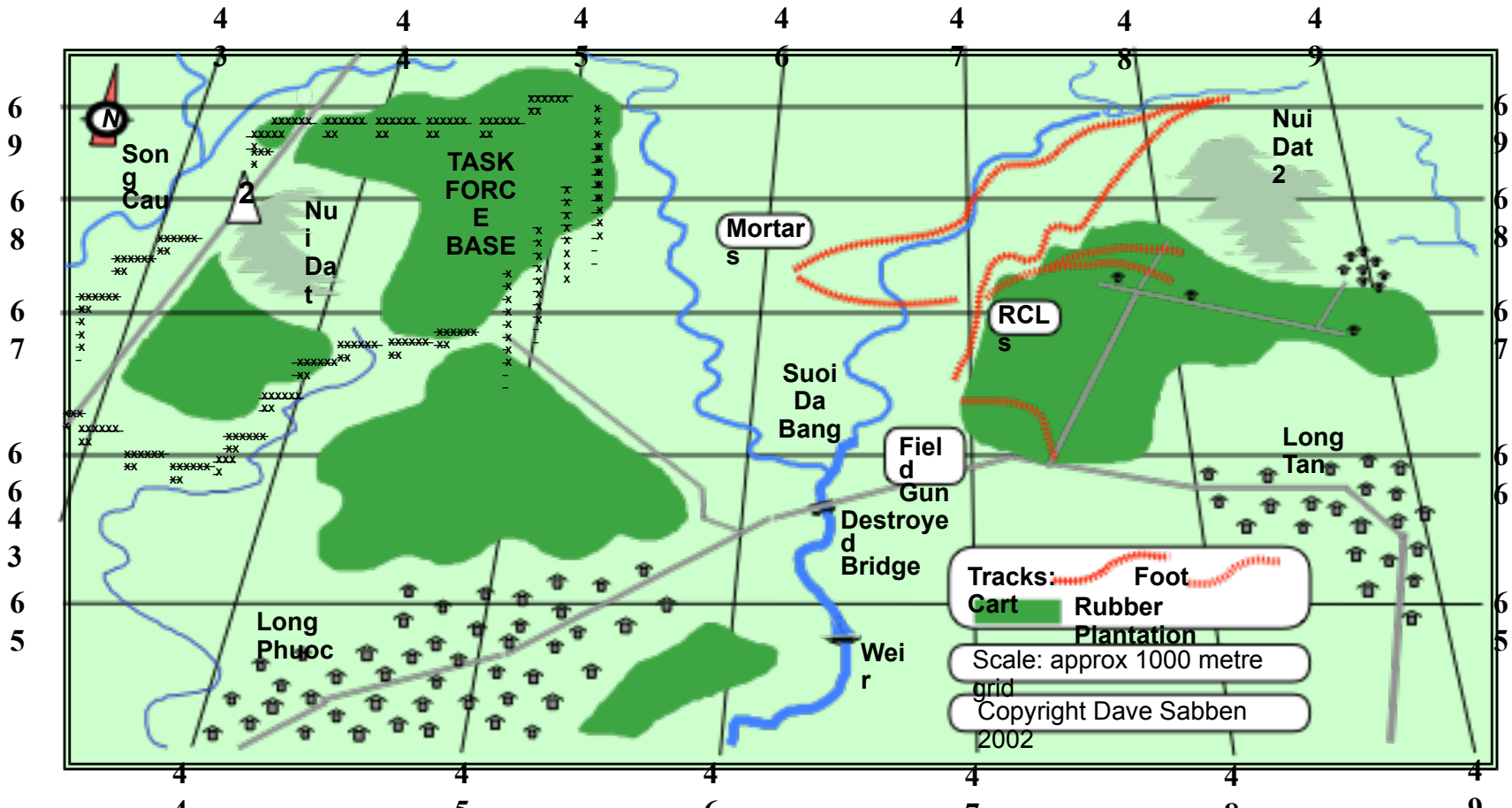
**A Coy area
(where the APCs
picked up A Coy)**

Air photo of Nui Dat
taken from north-east and much later than 1966

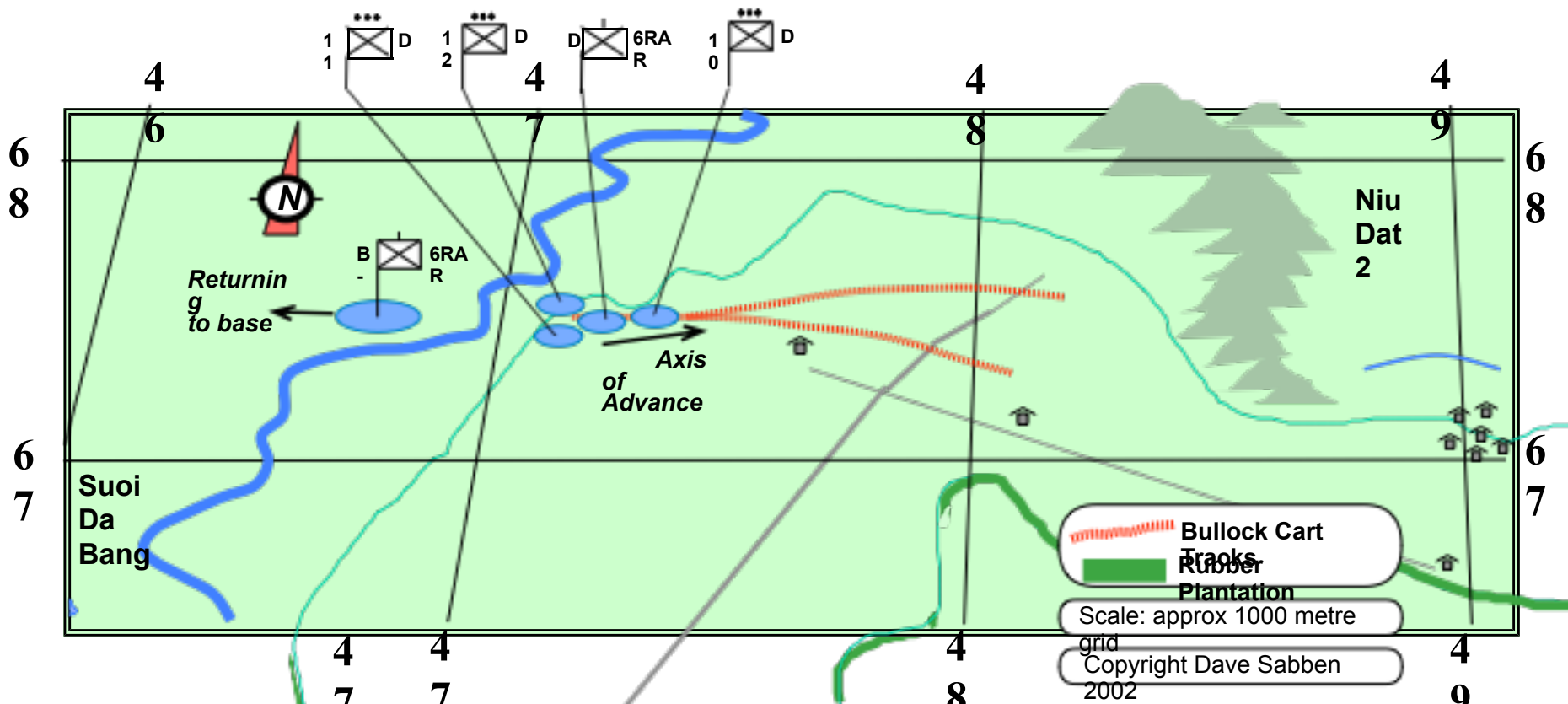


MAP 3: THE 17 AUG BOMBARDMENT, SHOWING VC BASEPLATE SITES & TARGET AREAS

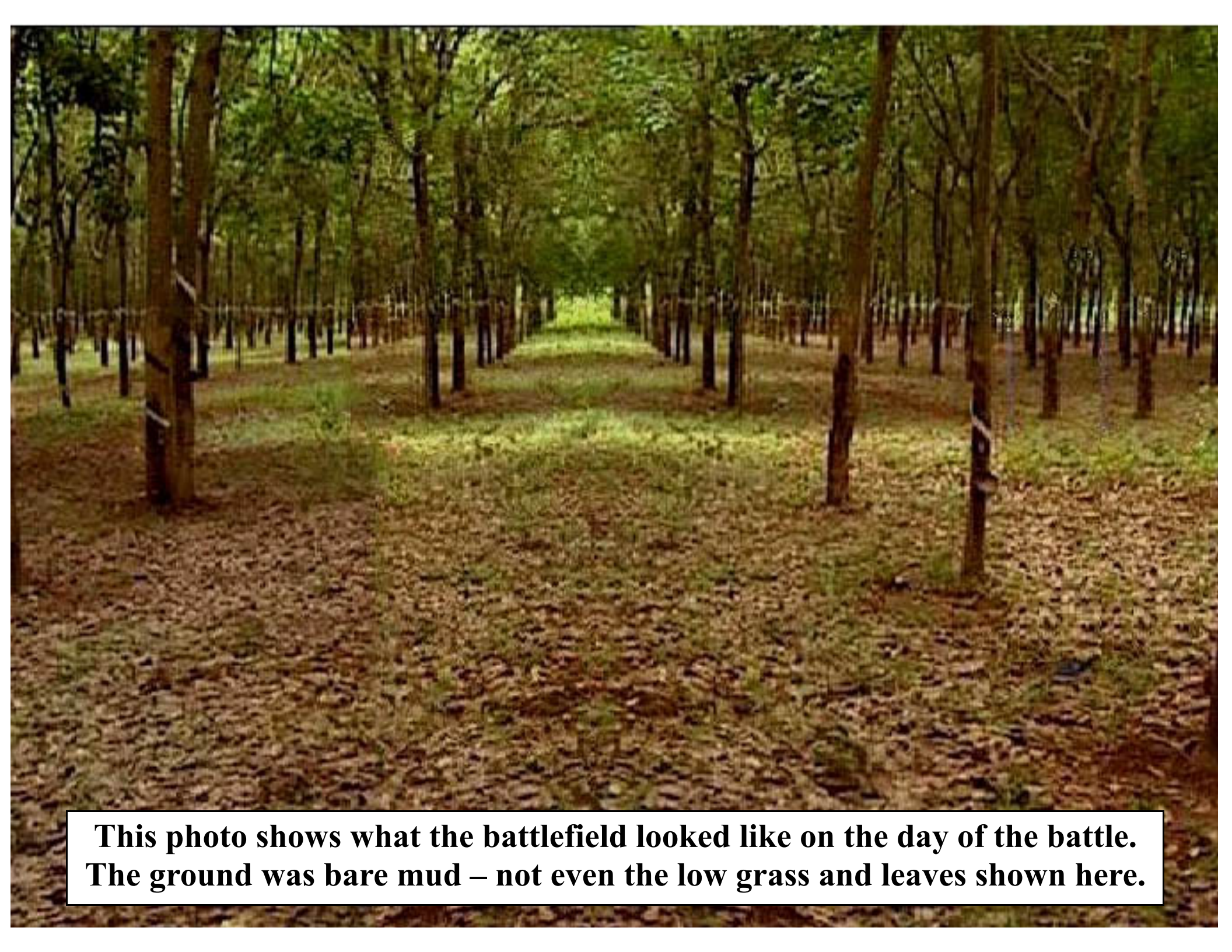
- SA S line
- Task Force HQ
- 105 Bty Artillery Engineer lines



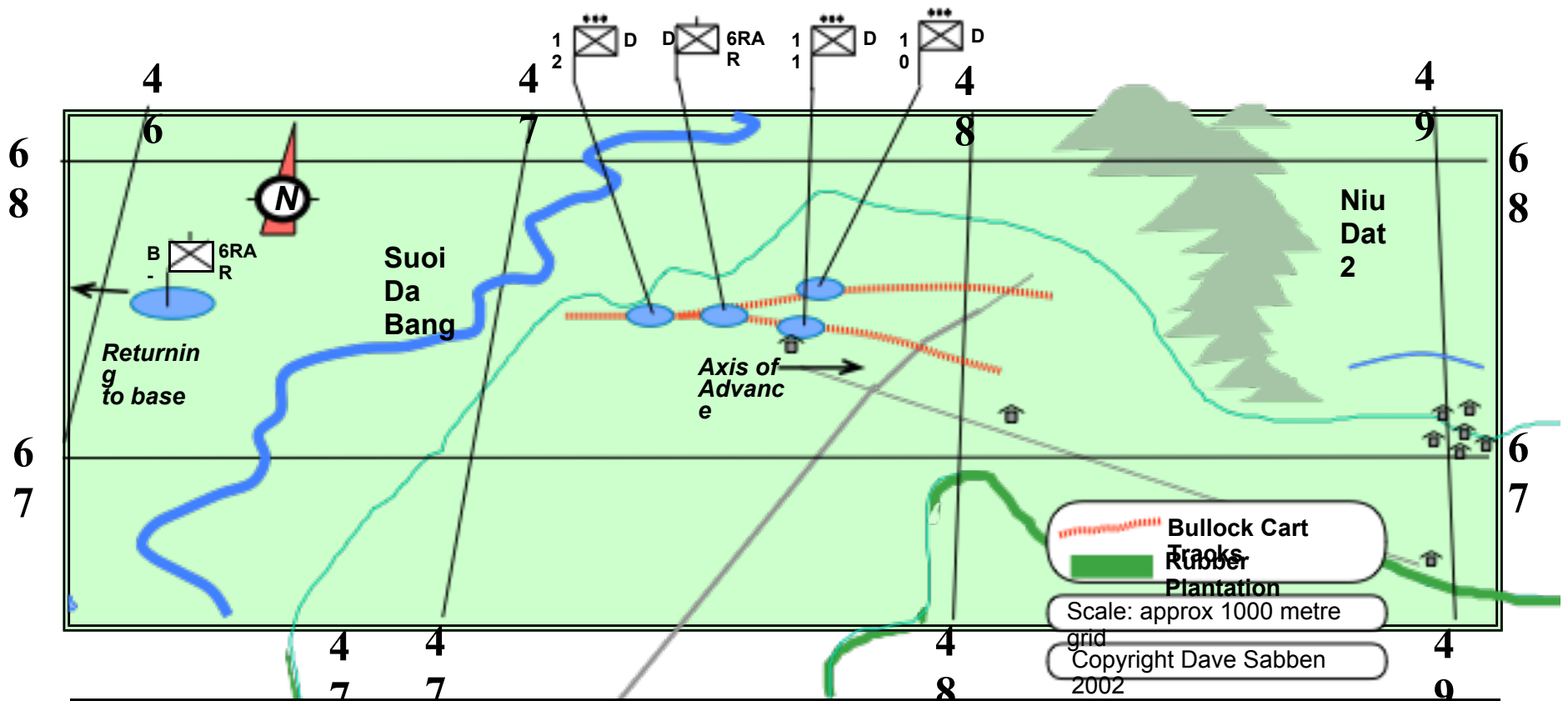
MAP 4: THE WITHDRAWAL TRACKS USED BY THE VC FIRE TEAMS, PRE-DAWN, 17 AUG



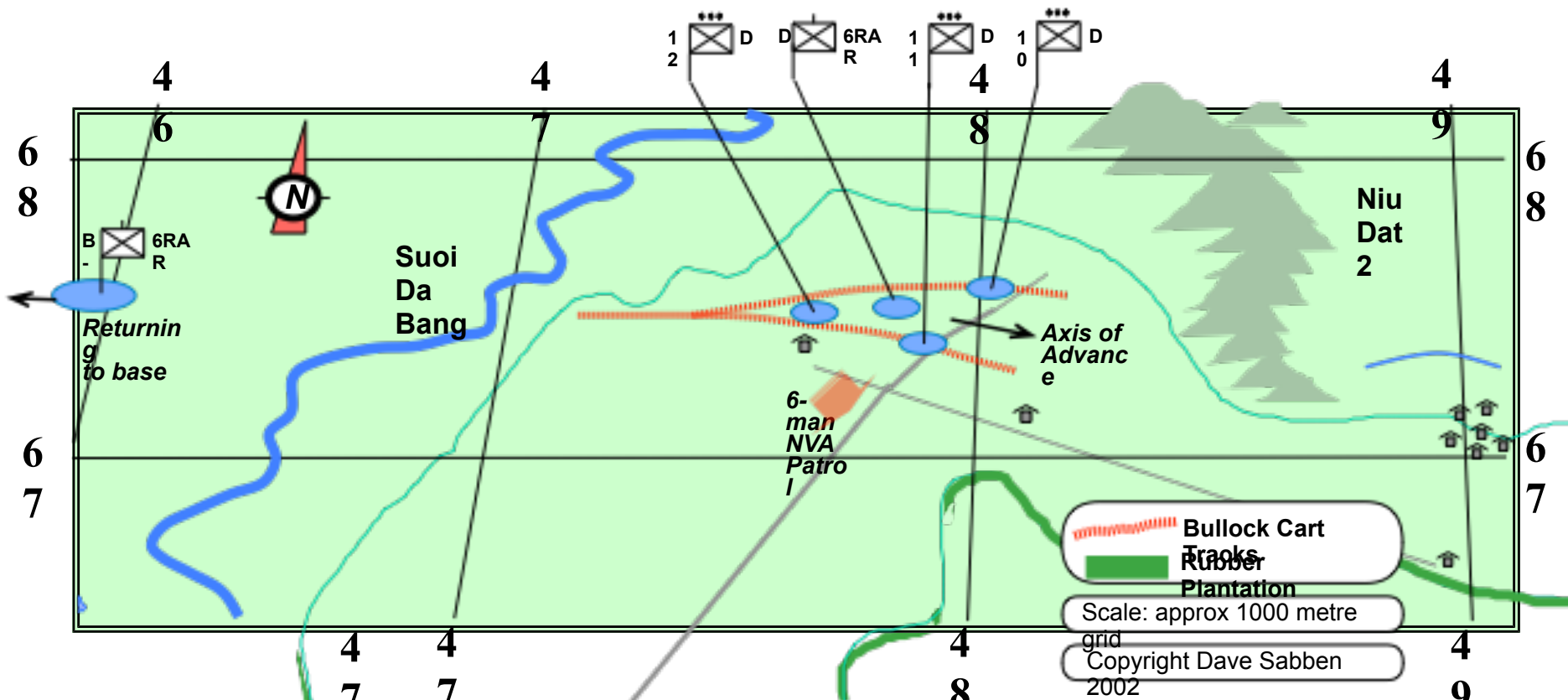
MAP 5: D COY FORMATIONS AS THEY FOLLOW THE SINGLE CART TRACK, 1500 hours, 18 AUG '66



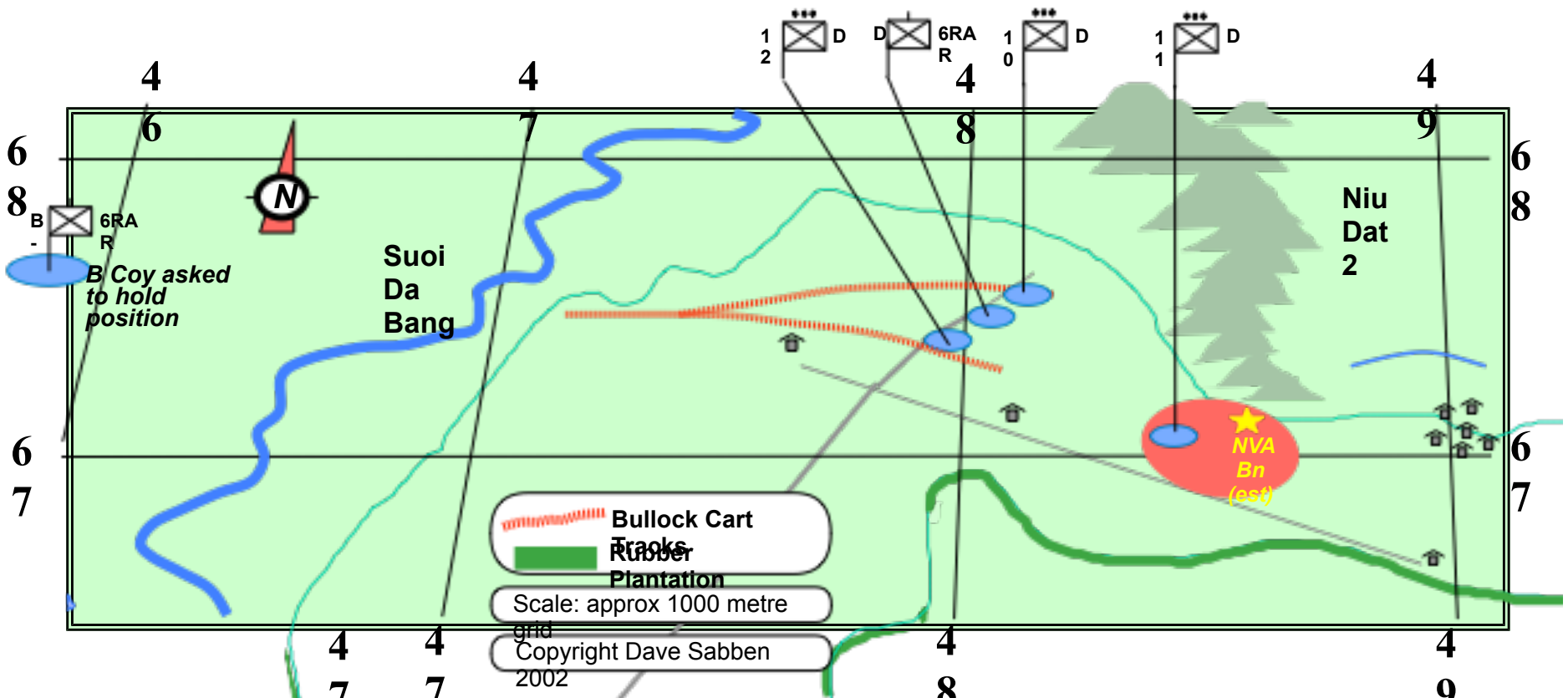
This photo shows what the battlefield looked like on the day of the battle. The ground was bare mud – not even the low grass and leaves shown here.



MAP 6: D COY FORMATIONS AS THEY FOLLOW THE TWO CART TRACKS, 1520 hours, 18 AUG '66



MAP 7: D COY FORMATIONS AT FIRST CONTACT WITH SMALL NVA PATROL - 1540 hrs, 18 AUG '66



MAP 8: 11 PLATOON LOCATION AND FIRST ENEMY ENVELOPING MOVES - 1600-1630 hrs, 18 AUG '66

LOAD

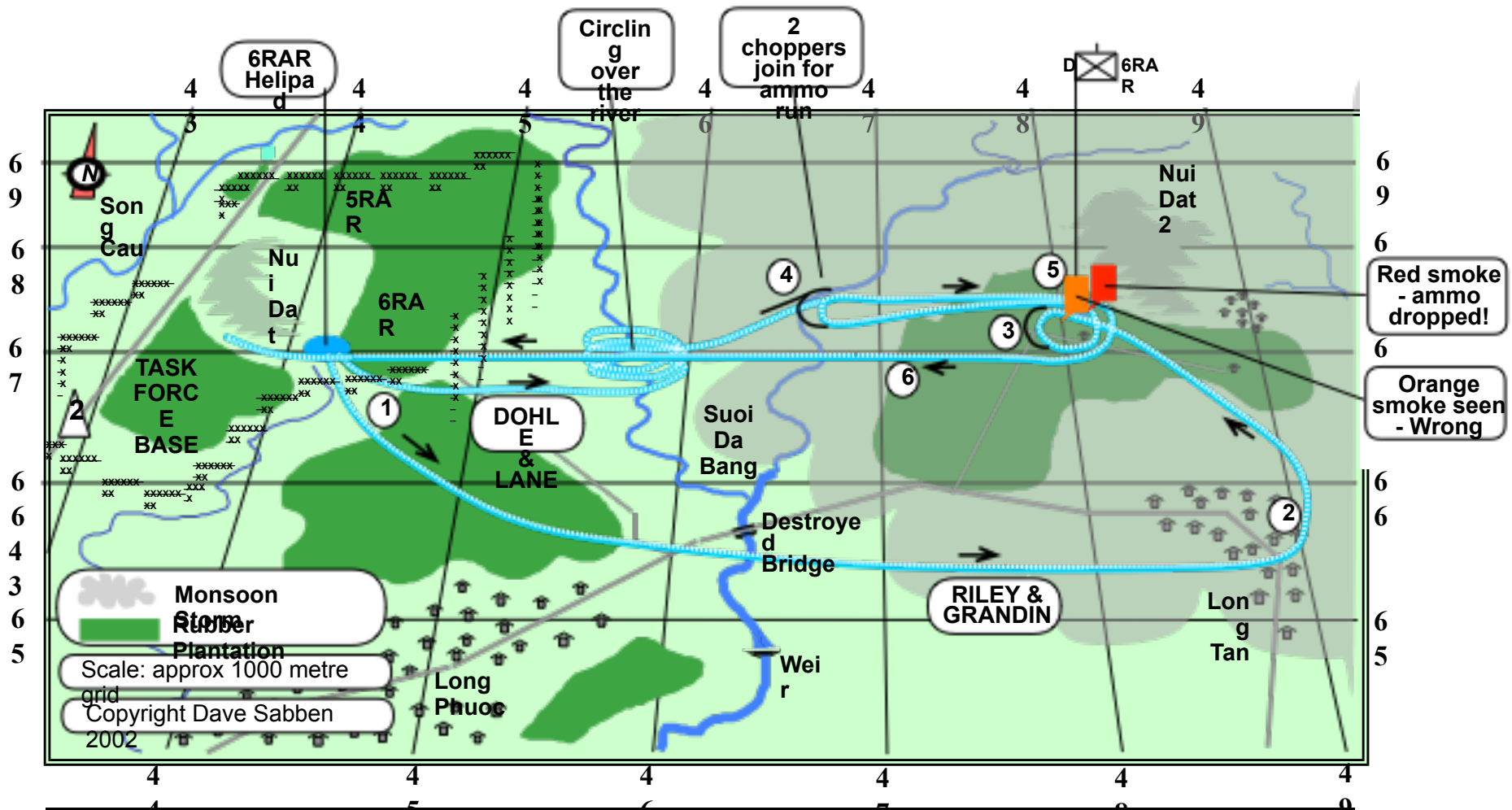
...fire support
made the vital
difference
on the day...



A 105mm Howitzer is loaded and fired from an emplacement at Nui Dat.

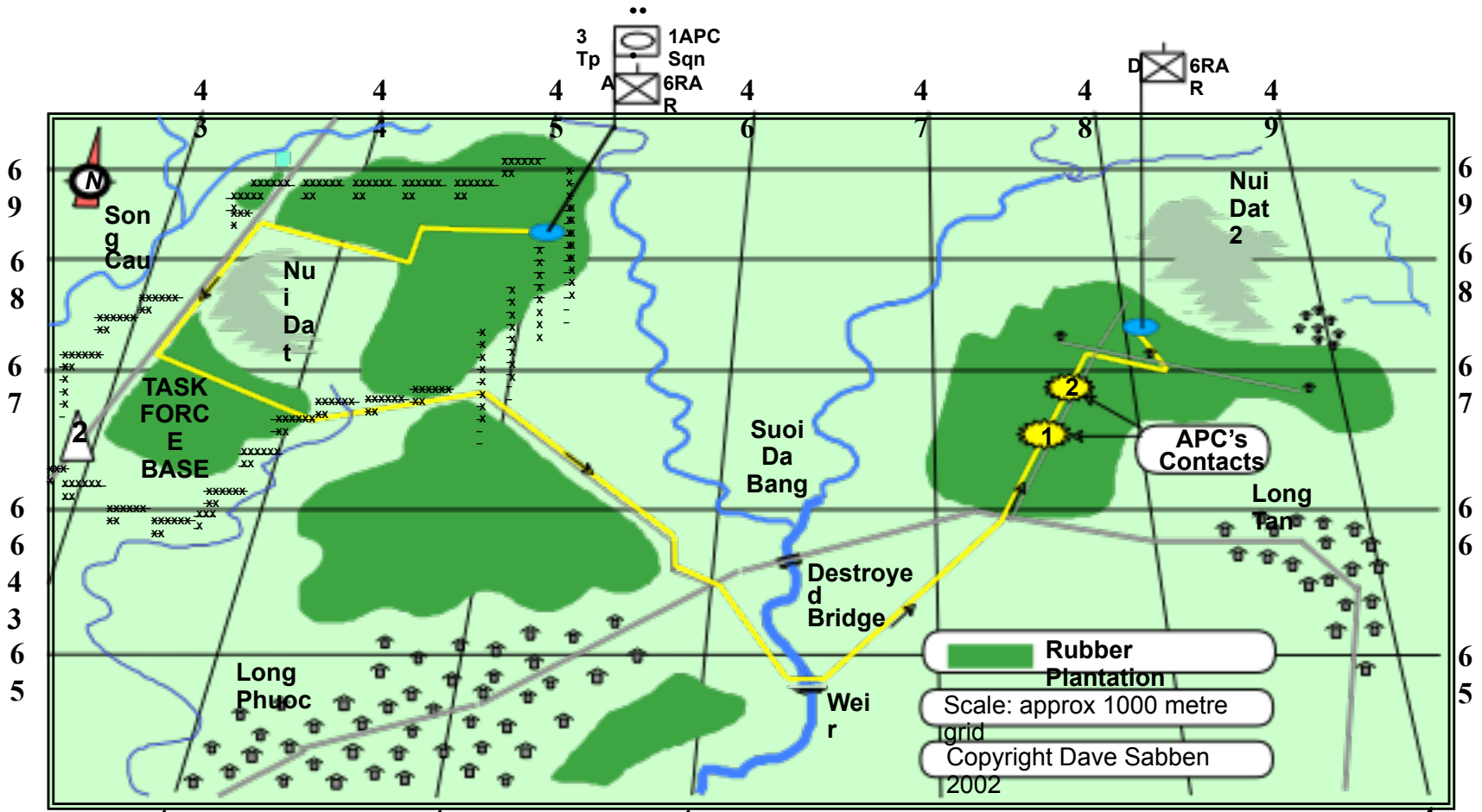


FIRE



MAP 11: ROUTES TAKEN BY RAAF AMMUNITION RESUPPLY HELICOPTERS, 18 AUGUST 1966

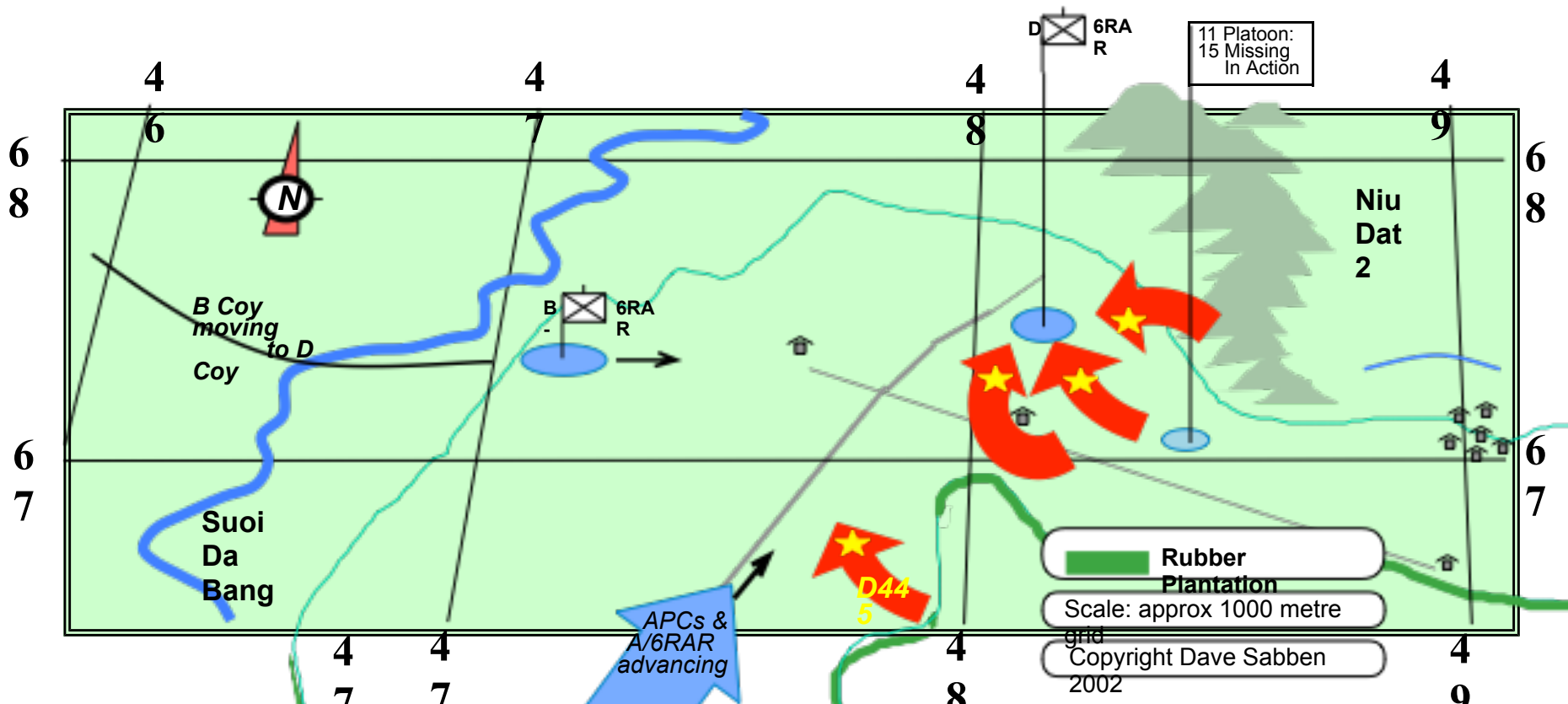
(1) Riley & Grandin (R&G) move forward to locate Delta Company while Dohle & Lane (D&L) take a holding pattern over the river. (2) R&G overfly Long Tan village, turn north west towards the battlefield. (3) R&G call for smoke - see "Orange". "Incorrect". Circle anti-clockwise and see "Red". "Correct". (4) Rejoin with D&L and guide them to Delta Company position. (5) Ammo drop made "...right into the CSM's lap...". (6) Both helicopters return to Task Force helipad.



MAP 12: THE ROUTE TAKEN BY THE APC & A/6RAR RELIEF COLUMN, 18 AUGUST 1966

APCs crossing water.
Note that on 18 Aug 1966,
the water was flowing swiftly
and the APC was packed!





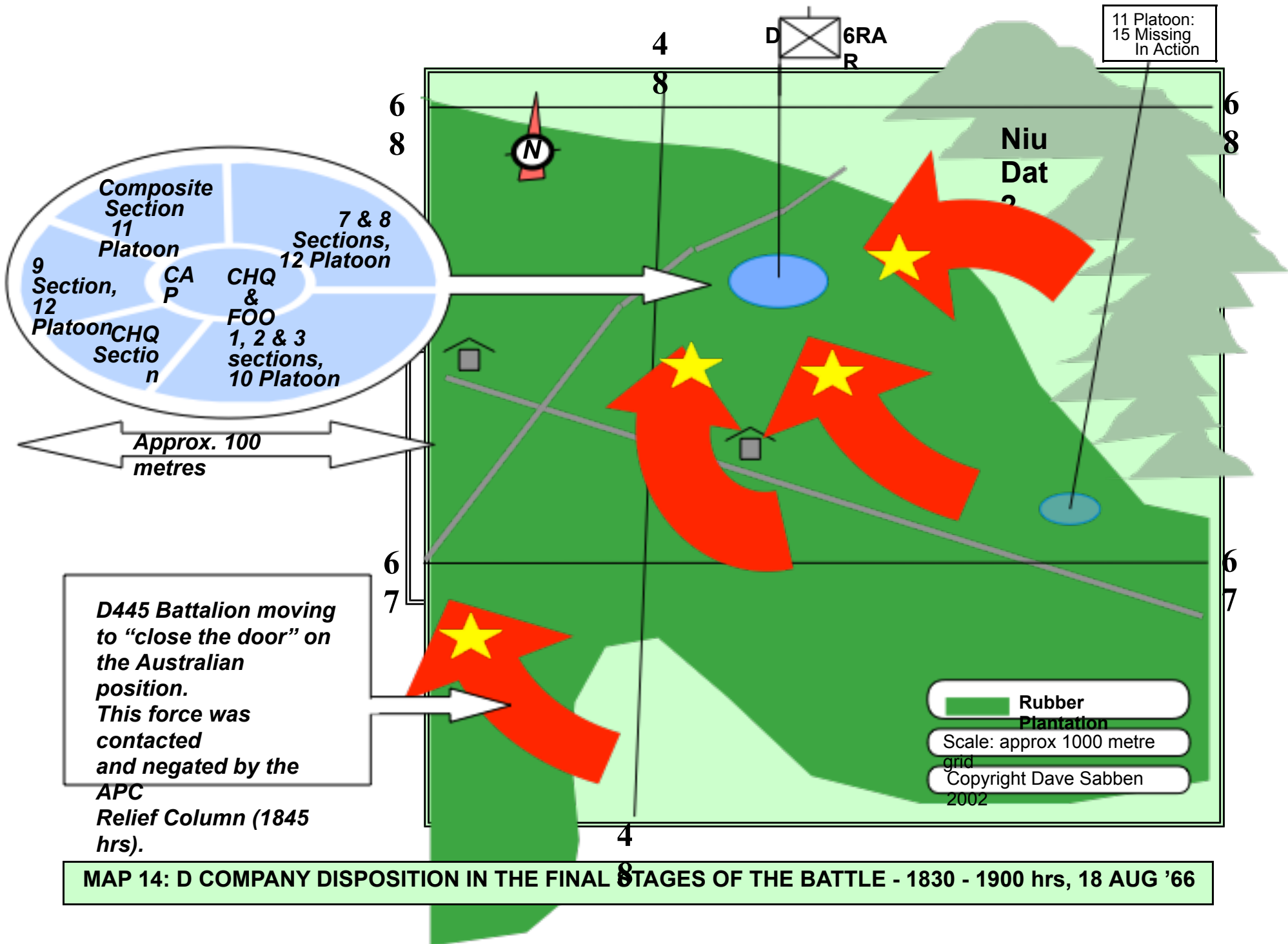
MAP 13: D COMPANY CONCENTRATED: THE MAIN ENCIRCLING MOVES - 1800-1830 hrs, 18 AUG '66

*Reduced 6RAR HQ
Group in APCs following*



www.awm.gov.au

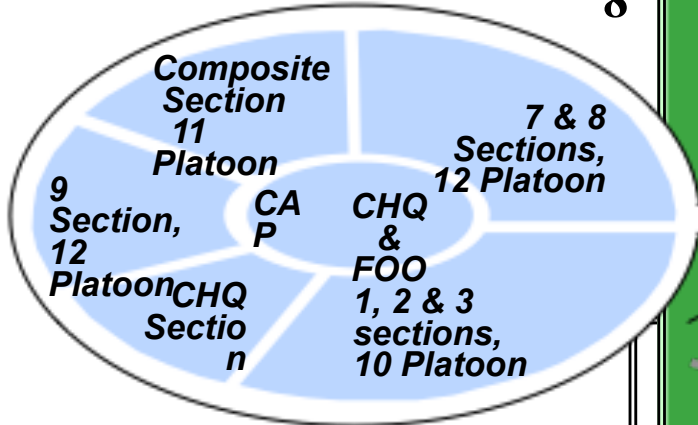
ART40758



11 Platoon:
15 Missing
In Action

Niu
Dat
2

D 6RA
R



Approx. 100 metres

D445 Battalion moving to "close the door" on the Australian position. This force was contacted and negated by the APC Relief Column (1845 hrs).

Rubber Plantation

Scale: approx 1000 metre grid

Copyright Dave Sabben 2002

MAP 14: D COMPANY DISPOSITION IN THE FINAL STAGES OF THE BATTLE - 1830 - 1900 hrs, 18 AUG '66

THE
12 DECISIVE BATTLES
OF THE
3 INDO-CHINA WARS

presented by
DAVE SABBEN MG

**05 – Long Tan
Questions?**

PLEASE DO NOT REMOVE THIS SLIDE

THE FINE PRINT

This Powerpoint show is copyright to Dave Sabben but is freely available for any non-profit use. It may be downloaded free from Dave's website: www.sabben.com

It was prepared for presentation to those who join his Decisive Battlefields and Long Tan Trek Tours of Viet Nam (see green panel for the "commercial") as introductions for the various battles.

Because the shows are live presentations, much more is in the narrative than is included in the text on the slides.

The shows are intended to be introductions and overviews – not detailed expositions or analyses. Views and conclusions are the author's and are not offered as the only possible or even as fully comprehensive views.

Where possible, permissions have been obtained to use maps or photos but some have been used without specific permission. Copyright holders who want their material either not used or credited, please contact Dave Sabben at <http://www.sabben.com/contact%20us.html>

Anyone wishing to make an anonymous donation towards the cost and time of putting this show together is invited to make a donation of any amount to (Australian) Westpac bank account BSB# 733 000, Account# 853 546 (branch = 360 Collins St, Melbourne), or (Australian) CBA bank account BSB# 063 550, Account# 1024 7640 (branch = Hampton, Victoria), either account in the name of David Sabben.

**If passing this slide show to others,
please don't remove this slide .**

THE "COMMERCIAL"

As at 2011, Dave Sabben leads one tour per year (second half of October) to visit some of the areas of Australian/ANZAC operations of 1966-1971. The highlight of these tours is to walk the Long Tan battlefield with Dave (a platoon Commander in that battle). The walk takes about 4 hours – about the time of the battle – so the group goes to all the key locations of the battle and hears about what happened pretty much in "real time".

For further enquiry into these tours, please visit:

<http://www.sabben.com/longtantrek/>
and select [VN%20Long%20Tan%20Trek%20Tours.html](http://www.sabben.com/VN%20Long%20Tan%20Trek%20Tours.html) or
[VN%20Decisive%20Battlefields%20Tours.html](http://www.sabben.com/VN%20Decisive%20Battlefields%20Tours.html)

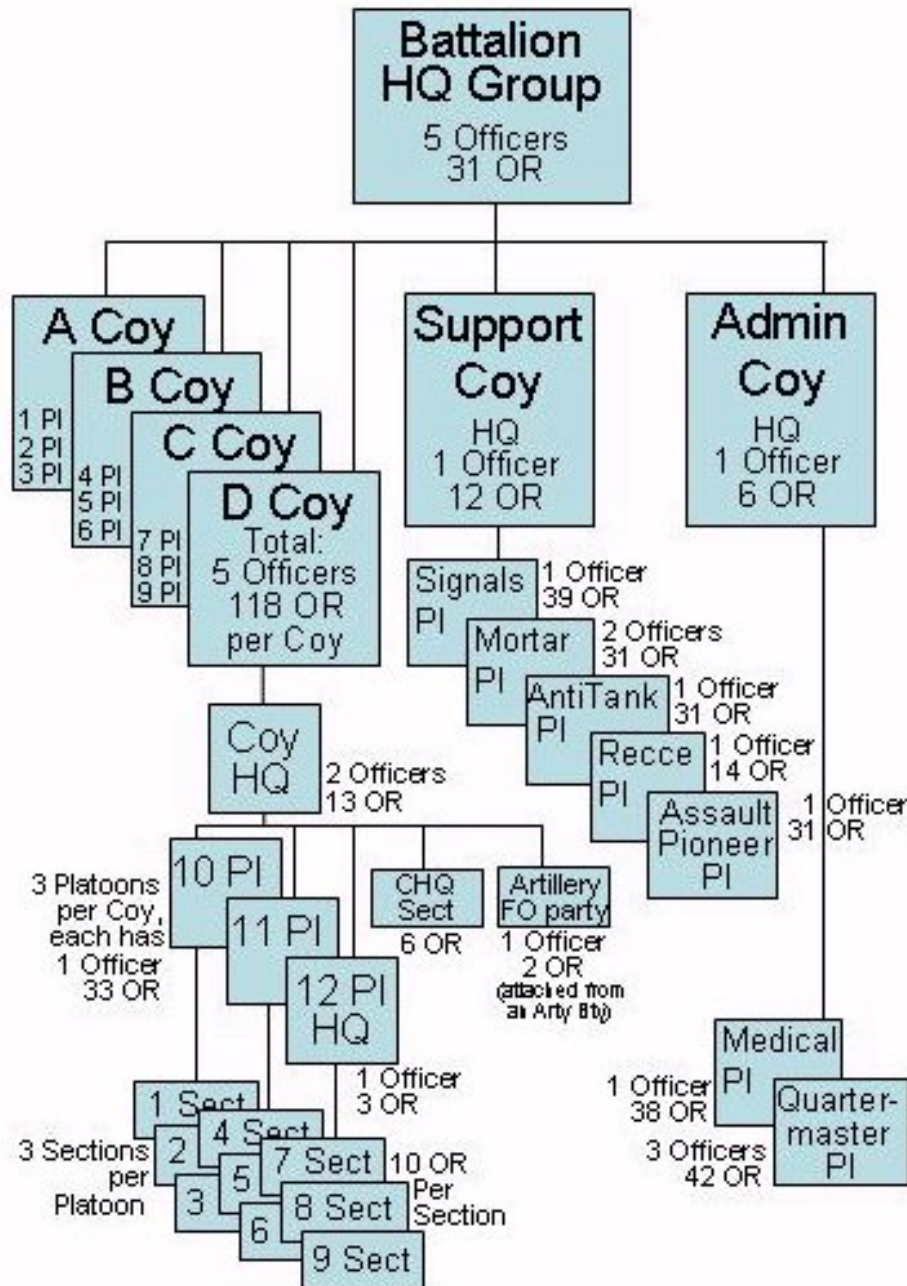
An optional extension to the Long Tan Trek Tour takes in the main US battles of northern South Viet Nam including Da Nang, Hue, the DMZ (including Khe Sanh) and the A Shau Valley (Hamburger Hill), then visits both Hanoi ('Hanoi Hilton', War Museum) and the Dien Bien Phu valley (both Viet Minh and French positions).

As well as the once –a-year-in-October tours, Dave can arrange a similar tour at any time of year for a group of 20 or more. Dates, durations, standards of accommodation, inclusions etc will be all your call. Please contact Dave (with numbers and preferences) at <http://www.sabben.com/contact%20us.html>

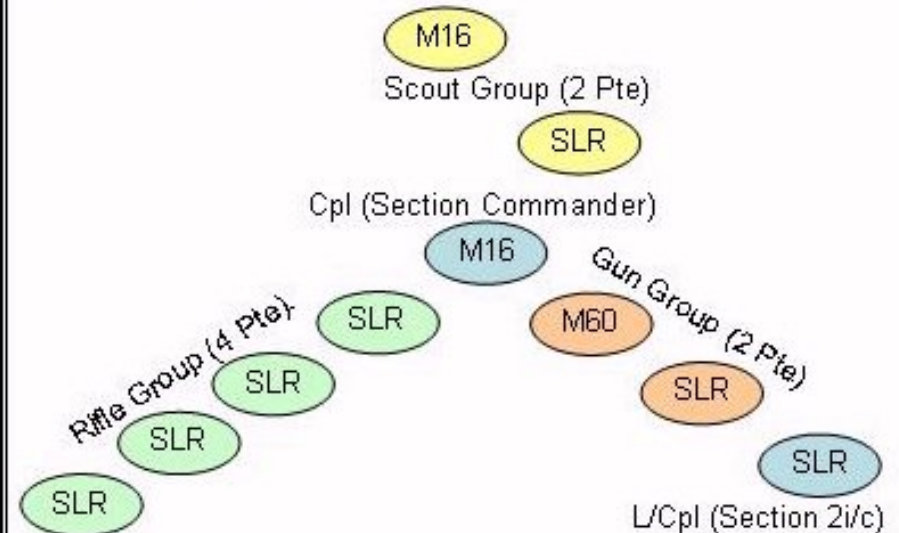
Note that these are "battlefield-oriented" tours – they do NOT go to the popular tourist sites. "Tourist" tours can be added before or after.

**If passing this slide show to others,
please don't remove this slide .**

An Infantry Battalion generally consists of 37 Officers and 755 other ranks (OR).



An Infantry Section generally consists of 1 Corporal, 1 Lance Corporal and 8 Privates (but in operational reality, 6 or even only 5 Private soldiers)



M16 = M16A1 Armalite Rifle, fully auto, 5.56mm round, weight 7 lbs., magazine capacity 20/30 rounds, range 300 metres, fibreglass stock & butt.

SLR = L1A1 Self Loading Rifle, semi auto, 7.62mm standard NATO round, weight 10lbs, magazine capacity 20 rounds, range 300metres. At Long Tan, soldiers carried 60 to 100 rounds (3, 4 or 5 mags).

M60 = General Purpose Machine Gun (GPMG M60) Fired a 7.62mm round fed by linked ammo belt of 100 rounds, weight 23 lb, range up to 1100 metres. 5 belts (500 rounds) were carried per Section at Long Tan.

Each soldier had an SLR bayonet and a machete. Few soldiers carried M26 HE frag or #83 smoke grenades. Claymore mines were not then available. One radio set (ANPRC 25) was carried per Platoon.